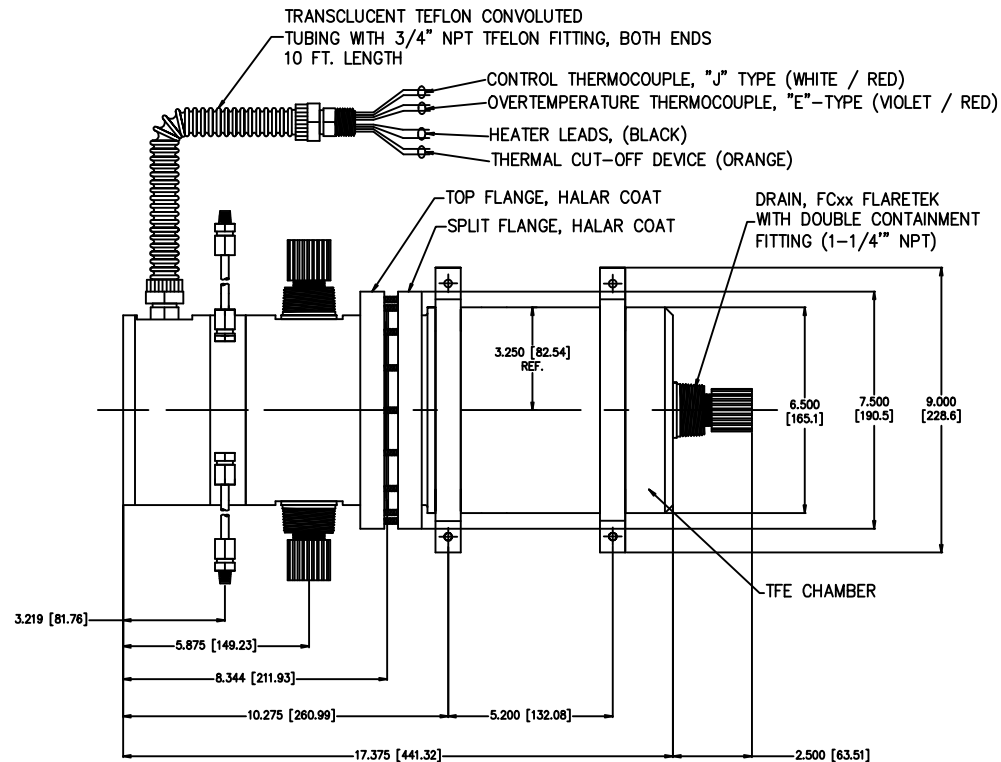


MODEL NUMBER: TIHAV-(10-30kw)-Vxxx-FCXX-Dxx
 INLET/OUTLET: FC100 = 1.0" FLARETEK FITTINGS
 FC75 = 3/4" FLARETEK FITTINGS
 FC50 = 1/2" FLARETEK FITTINGS
 DRAIN FITTING: FC75 = 3/4" FLARETEK FITTING
 FC50 = 1/2" FLARETEK FITTING



*NOTES:

- THERMAL CUT-OFF DEVICE RATED TO 240 C, MAXIMUM 16.7 A AT 240 VAC
- 2 FT. LEAD WIRE BEYOND CONDUIT SUPPLIED
- WETTED COMPONENTS ARE PTFE TEFLON
- PRIMARY SEALS WITH CHEMRAZ AND TEFLON

DIMENSIONS ARE IN STANDARD AND METRIC FORM

4	DO	8/03	CORRECT LOCATION OF OUTLET PURGE	PCN: —
3	DO	6/03	CHANGE DOUBLE CONTAINMENT TO 2" ON IN/OUTLET	CUSTOMER No: —
2	DO	05/03	UPDATED TITLE BLOCK	MATERIAL: —
1	DO	02/2002	ADD FLARETEK FITTING INFORMATION	—
REV.	BY	DATE	DESCRIPTION OF CHANGE	

THIS DRAWING IS THE PROPERTY OF PROCESS TECHNOLOGY. IT CONTAINS CONFIDENTIAL INFORMATION AND MAY NOT BE REPRODUCED IN ANY WAY WITHOUT THE PERMISSION OF PROCESS TECHNOLOGY.

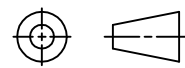
DIMENSIONS ARE IN INCHES
 UNLESS OTHERWISE NOTED:

TOLERANCES ARE:

0.00 = ±0.015

0.000 = ±0.010

ANGLES = ±1°



3rd ANGLE PROJECTION

INCHES
 (mm)

PROCESS TECHNOLOGY®

LUFMAN®

7010 LINDSAY DRIVE MENTOR, OHIO
 440-946-9500 FAX 440-974-9561

DRAWN BY: <i>DJO</i>	DATE: 10/22/01	DESIGNER:	DATE:
DESCRIPTION TEFLON IN-LINE HEATER, 1-3kW (NEW STANDARD MOLDED) GENERAL DESCRIPTION			
APPROVED BY:	SCALE: NONE	DRAWING No. 1 OF 1	05-0497-4